

Grid Metals Corp Updates Drilling Program at East Bull Lake

Toronto, Ontario, October 7, 2020 – Grid Metals Corp. (the "Company") (TSXV:GRDM) today provided an update regarding its 2020 exploration program at its 100% owned East Bull Lake ("EBL") palladium property (the "Property") in Ontario. The Company is exploring for palladium mineralization along a 12-kilometre-long interpreted feeder structure. The East Bull Lake Property covers approximately 85% of the palladium-bearing East Bull Lake Intrusion, located approximately 80 km west of Sudbury, Ontario.

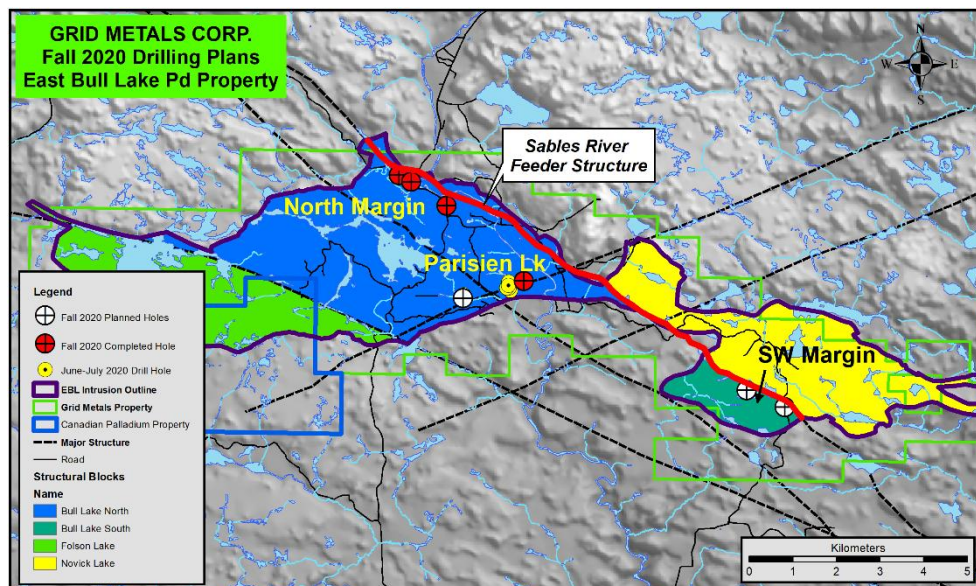
Highlights

- Drilling resumed in early September and to date four holes have been completed – assays are pending
- An additional three holes are planned
- The next hole will be in an area of anomalous palladium mineralization identified in surface grab samples taken in August 2020 including a maximum of 7.67 g/t Pd, 1.41 g/t Pt and 0.20 g/t Au in one sample from the Parisien Lake target area
- Initial work has been completed on metal tenors on drill samples from East Bull and results compare favourably with those typically observed in mill feed at the Lac des Iles palladium mine

Update on Drilling Activities

Since resumption of drilling on September 3rd four new drill holes have been completed including a follow-up hole on the Feeder Target in the Parisien Lake area and three holes drilled at the North Margin Target area. Three more holes are planned - two holes in the East Lobe of the intrusion and one additional hole in the Parisien Lake - Kidd Zone area. Completed and proposed hole locations for the current drilling program are shown on Figure 1, below. Samples have been submitted for assay analysis on three of the first four holes with results now pending.

Figure 1. East Bull Lake Property Map showing location of drill holes planned for the fall campaign (Note: drilling plans are subject to change).



Field Program

A four-week field program of mapping, prospecting and field checking of untested geophysical anomalies was completed in August and September. Seventy-five surface grab samples collected from the Parisien Lake (West lobe) and Southwest Margin (East Lobe) target areas have been analysed for Pd, Pt, Au, Cu, Ni and Co. Nine of these samples returned >1 g/t combined Pd + Pt + Au (see table, below). The highest palladium grade was obtained from sample 7231 from the Kidd Zone in the Parisien Lake area, which returned 7.67 g/t Pd, 1.41 g/t Pt and 0.20 g/t Au. The sample location is approximately 120 metres south of the collar for drill hole EBL20-02, and 20 metres north of the collar for a previously proposed drill hole, P2A, which will now be drill and is designed to fill a major gap in the historical drilling in the Parisien Lake area. Follow-up sampling is being undertaken in this area. Additional anomalous palladium grades were obtained from several samples from the East Lobe including six samples from the Central Zone in an area that will be drilled at the end of the current program.

Table 1. Selected analytical results for surface grab samples taken in August and September, 2020 from the Parisien Lake and Southwest Margin target areas. Easting and Northing coordinates are based on the NAD 83 datum and the UTM Zone 17N projection. 3E = combined Pd, Pt and Au grade.

Sample#	Target Area	Zone	Easting (m)	Northing (m)	Rock Type	Pd (g/t)	Pt (g/t)	Au (g/t)	3E (g/t)
7231	Parisien Lake	Kidd	410076	5141811	Leucogabbro	7.67	1.41	0.20	9.28
7232	Parisien Lake	Kidd	410101	5141812	Leucogabbro	0.84	0.29	0.11	1.24
7254	SW Margin	Central	416425	5139663	Gabbro	2.79	0.86	0.19	3.84
7257	SW Margin	Central	416627	5139673	Gabbro	3.65	1.15	0.44	5.24
7258	SW Margin	Central	416329	5139653	Leucogabbro	1.01	0.25	0.06	1.32
7259	SW Margin	Central	416370	5139635	Leucogabbro	1.27	0.33	0.11	1.70
7260	SW Margin	Central	416404	5139607	Leucogabbro	0.78	0.26	0.06	1.09
7264	SW Margin	Central	416591	5139589	Gabbro	2.29	0.67	0.19	3.15
7266	SW Margin	South	416980	5138989	Gabbro	0.61	0.23	0.22	1.05

Geochemistry Program.

Pulps from 50 core samples collected from the June-July 2020 drill program were analyzed for their whole-rock major, minor and trace element geochemistry, including total sulfur determinations. The new analytical data, in addition to the Pd, Pt, Au, Ni, Cu and Co abundances for ~1,700 core samples that were obtained for the first seven drill holes completed this year, are being investigated in order to better understand the relationships between grade, metal tenor (i.e., the metal grade in the sulfide fraction of the rock assuming all of the metal reports to sulfides), rock type, sulfide mineralization, alteration, magnetic susceptibility and stratigraphic position. This review is ongoing but initial results are providing important new exploration criteria based on the following observations:

- Pd grade and tenor are positively correlated with the relative abundance of Cu-rich sulfide and attain maximum values in rocks in which chalcopyrite accounts for over 50% of the total sulfide present

- Pd tenors calculated using new total sulfur data range from ~100 to ~700 g/t Pd in samples with >1 g/t Pd
- The observed Pd tenors overlap with those observed in typical mill feed material at the Lac des Iles Palladium mine in northwestern Ontario, which currently produces a high-value, Pd-rich sulfide concentrate having Pd grades typically in the 150 to 300 g/t range
- Two major stratigraphic units, the Inclusion-Bearing Zone and the overlying Massive Leucogabbro Zone, are the principal hosts to the highest grade and tenor Pd mineralization on the Property and both can be distinguished from mineralogically similar but unmineralized overlying stratigraphic units using whole-rock geochemical data
- All samples with highly anomalous Pd grades (i.e., >1 g/t Pd) are hosted by rocks having extremely low magnetic susceptibilities

Dr. Dave Peck, the Company's Vice President of Exploration and Business Development, commented: "We continue to systematically drill and explore for areas of great Pd enrichment at East Bull. Results to date from the 2020 exploration program reinforce our belief that the widespread palladium mineralization we continue to discover on the Property is the 'smoking gun' that will lead us to areas of enhanced grade and thickness. The fact that Pd grades exceeding 1 g/t have been identified from surface and drill core samples extending over a strike length of >20 km provides the technical justification for continued exploration investment on the Property. As does the fact that we are still finding previously unsampled outcrops with good grade Pd mineralization using basic prospecting methods – especially in areas with improved access due to recent logging activity. We firmly believe that significant potential remains for the discovery of one or more feeder structure-related palladium deposits on the property."

Quality Assurance and Quality Control

Grid Metals applies best practice quality assurance and quality control ("QAQC") protocols on all of its exploration programs. For the current drilling program, core is logged and sampled at a core facility located in the town of Massey, Ontario – approximately 30 km south of the property. NQ-size drill core samples are cut into halves using a diamond saw. Standard sample intervals of 1.00 metre length are used unless a major geological, structural or mineralization boundary is encountered. Samples are bagged and tagged and driven by Company consultants to ALS Laboratories' sample preparation and analytical laboratory in Sudbury, Ontario. ALS analyzes each sample for Pd, Pt and Au using a lead collection fire assay on a 30 g pulp split and an ICP finish. Copper, Ni and Co are analyzed by ALS using a multi-acid digestion and an ICP finish. ALS also performs complete characterization whole-rock geochemical analyses on pulp rejects as directed by the Company, including the determination of major, minor and trace element abundances with research-grade accuracy and detection limits. The Company uses two PGE certified reference materials ("CRMs") and one analytical blank purchased from Canadian Resource Laboratories to monitor analytical accuracy and check for cross contamination between samples. One of the CRMs or the blank are inserted every tenth sample within a given batch. The analytical results for the two CRMs and the blank for the sample batches reported here did not show any significant bias compared to the certified values and the results fell within the acceptable limits of variability.

Dr. Dave Peck, P.Geo., has reviewed and approved the technical content of this release for purposes of National Instrument 43-101.

About Grid Metals Corp.

Grid Metals Corp. is an exploration and development Company that has a diversified portfolio of projects in the nickel-copper-platinum group metal sectors. These commodities are vital to the emerging battery metals, energy storage and automotive sectors. All of Grid's projects are located in secure North American mining jurisdictions. The Company is focused on timely advancement of its property portfolio through prudent exploration and development activities.

To find out more about Grid Metals Corp., please visit www.gridmetalscorp.com.

On Behalf of the Board of Grid Metals Corp.

Robin Dunbar - President, CEO & Director Telephone: 416-955-4773 Email: rd@gridmetalscorp.com

David Black - Investor Relations Email: info@gridmetalscorp.com

We seek safe harbour.

This news release contains forward-looking statements within the meaning of the United States Private Securities Litigation Reform Act of 1995 and forward-looking information within the meaning of the Securities Act (Ontario) (together, "forward-looking statements"). Such forward-looking statements may include the Company's plans for its properties, the overall economic potential of its properties, the availability of adequate financing and involve known and unknown risks, uncertainties and other factors which may cause the actual results, performance or achievements expressed or implied by such forward-looking statements to be materially different. Such factors include, among others, risks and uncertainties relating to potential political risk, uncertainty of production and capital costs estimates and the potential for unexpected costs and expenses, physical risks inherent in mining operations, metallurgical risk, currency fluctuations, fluctuations in the price of nickel, cobalt, copper and other metals, completion of economic evaluations, changes in project parameters as plans continue to be refined, the inability or failure to obtain adequate financing on a timely basis, and other risks and uncertainties, including those described in the Company's Management Discussion and Analysis for the most recent financial period and Material Change Reports filed with the Canadian Securities Administrators and available at www.sedar.com.

Neither the TSX Venture Exchange nor its Regulations Services Provider (as that term is defined in the policies of the TSX Venture Exchange) accepts responsibility for the adequacy or accuracy of this press release.

This news release does not constitute an offer of securities for sale in the United States. The securities being offered have not been, nor will they be, registered under the United States *Securities Act of 1933*, as amended, and such securities may not be offered or sold within the United States absent U.S. registration or an applicable exemption from U.S. registration requirements.