

DEVELOPING A CRITICAL MINERALS HUB IN SOUTHEASTERN MANITOBA, CANADA

We are focused on becoming one of the next fully permitted lithium operations in North America while advancing our copper/nickel project.

INVESTMENT HIGHLIGHTS



Spodumene zone showing distinct coloration versus country rock

POSITIONING DONNER LAKE FOR A REBOUND IN LITHIUM PRICES

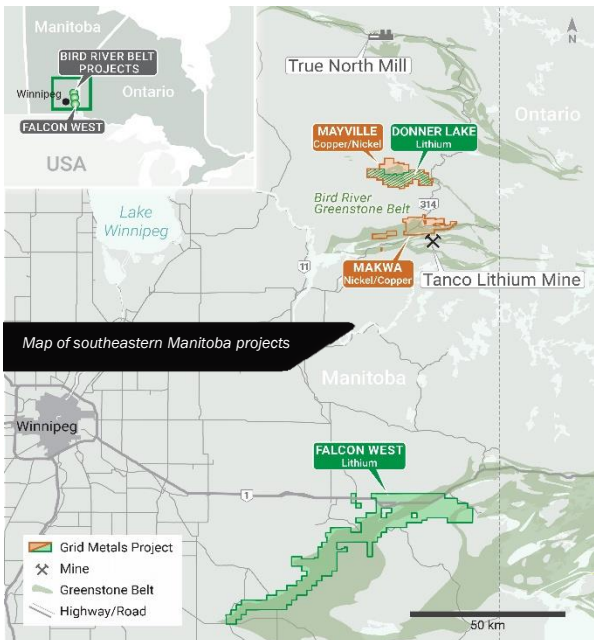
Submitting mining permit and completing economic study in 2025 to make Donner one of the next fully permitted lithium projects in North America. Utilizing existing infrastructure in order to dramatically reduce capex and shorten permitting timeline.

HIGH POTENTIAL BELT-SCALE COPPER/NICKEL PROJECT WITH SIGNIFICANT RESOURCE

The Makwa Mayville project has an open pit resource of 40 MMt containing over 300 MMlbs of Cu, 200 MMlbs of Ni and 300,000 oz of precious metals. Commencing resource exploration drilling to support mine development.

NEAR-TERM CATALYSTS PROVIDE RE-RATE POTENTIAL

- Updated copper/nickel resource in the next 1-2 months
- Exploration results from both lithium and copper/nickel drilling
- Advancement of project towards permitted status

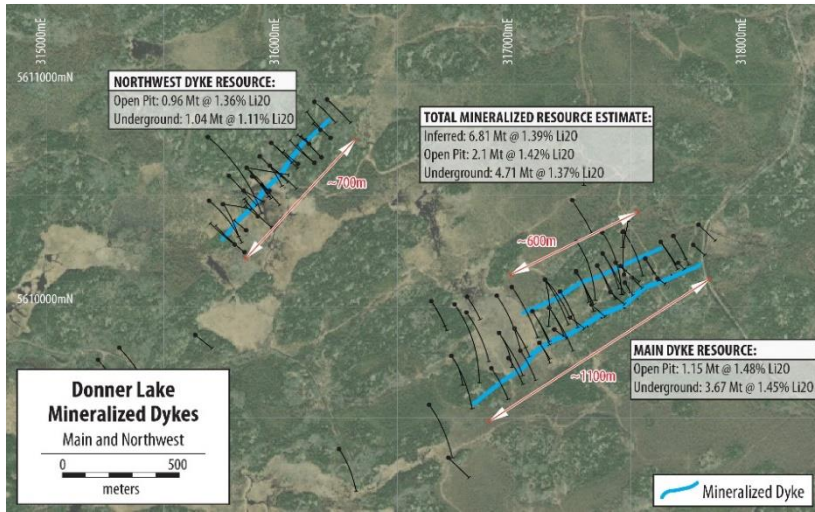


Tanco Mine, one of Canada's two producers of spodumene concentrate



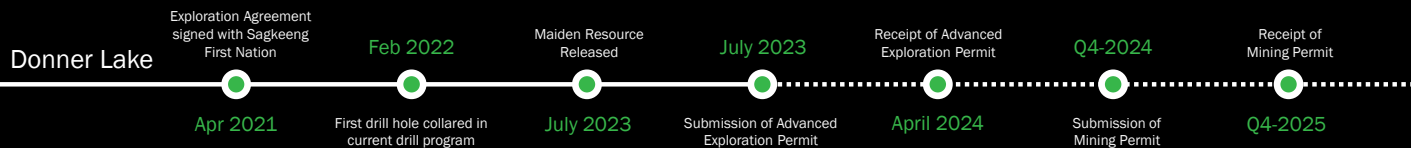
Aerial view of True North mill complex

MAIDEN MINERAL RESOURCE AT DONNER LAKE (JULY 2023)



Classification (Cut-Off Grade)	Deposit	Inferred Resource (tonnes)	Grade (% Li ₂ O)
Open Pit (0.3% Li ₂ O)	Main Dyke	1,145,000	1.48%
	NW Dyke	955,000	1.36%
	Total	2,100,000	1.42%
Underground (0.5% Li ₂ O)	Main Dyke	3,669,000	1.45%
	NW Dyke	1,042,000	1.11%
	Total	4,710,000	1.37%
GLOBAL	Main Dyke	4,814,000	1.46%
	NW Dyke	1,997,000	1.23%
	Total	6,810,000	1.39%

Maiden open-pit resource provides the foundation for an accelerated production timeline with additional mining optionality from underground ore.

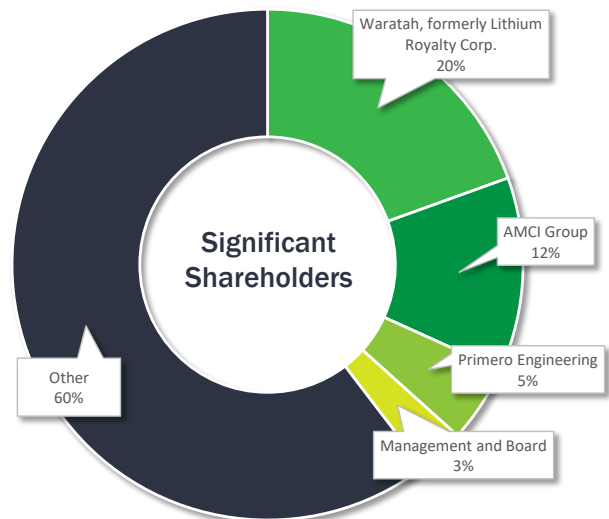


CORPORATE OVERVIEW

TSXV: GRDM
OTCQB: MSMGF
FSE: NJF1

Share Price (as of April 5, 2024)	C\$0.08
Shares Outstanding (Basic)*	203.8 M
Options/RSU/DSU*	11.2 M
Warrants*	12.4 M
Fully Diluted Shares Outstanding*	227.4 M
Market Capitalization (Basic)	C\$16 M
Cash Position	~C\$5 M

*as of September 30, 2023, including the C\$5 MM financing completed in December 2023



Analyst Coverage:

CONTACT US: +1 416-955-4773
INFO@GRIDMETALSCORP.COM

FOLLOW US: @GRIDMETALS